

TouchLock™ XL All Weather Keyless Fingerprint Lock

Quick Start Guide

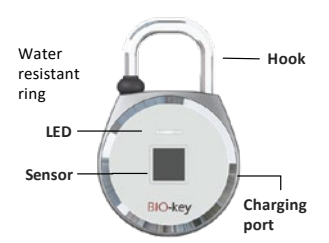


model ATL01F

aluratek.com qsg Q10473 Copyright © 2018 Aluratek, Inc. All Rights Reserved.

TouchLock™

TouchLock is a smart padlock. There is no need for keys or combinations. The lock can store up to 20 fingerprints which easily allows you to share your lock with your family and friends. Our TouchLock XL also comes with a waterproof rubber ring which allows the locks to be used outdoors.



Activation
Press hook to activate the lock:
Note:
If the LED light is not activated, please charge the lock using the included micro-USB cable. If no action is proceeded within 15 seconds after the lock is activated, the power will be turned off automatically.

Unlock



Press the hook once and wait for the flashing blue light.
Place your registered finger on the touch sensor and hold until you see the solid blue light
*If a red light flashes, please place your finger on the sensor and try again.
TouchLock will then unlock once the registry is confirmed.
*Finger recognition may require multiple attempts due to your placement of the finger on the touch sensor.

Fingerprint Registration



Press the hook once, wait for the flashing red and blue light;
Put your finger on the sensor and wait for the solid blue light
*If a red light flashes, please put flatter part of your finger on the sensor and try again.
Repeat step 2 for three times until you see a solid blue light flashing for 4 seconds, indicating the successful enrollment of the fingerprint.

Registration of Additional Fingerprints



- Press and hold hook until you see the rapid flashing blue light. Use a previously registered finger to authenticate. After successful authentication, the light will change to a solid blue light for a few seconds. If a red light appears, lift finger and retry. Immediately following the solid blue light, wait for the flashing red and blue light.
- Put your finger on the sensor and wait for the solid blue light
*If a red light flashes, please put flatter part of your finger on the sensor and try again.
- Repeat step 2 for three times until you see a solid blue light flashing for 4 seconds, indicating the successful enrollment of the fingerprint.

Erase Fingerprint Records



Press the hook for 6 seconds until you see the rapid flashing blue light
Touch sensor with the previously enrolled finger until you see the solid blue light.
*If a red light flashes, please put your finger on the sensor and try again.
Press the button again for 6 seconds when you see the rapid flashing red and blue light.

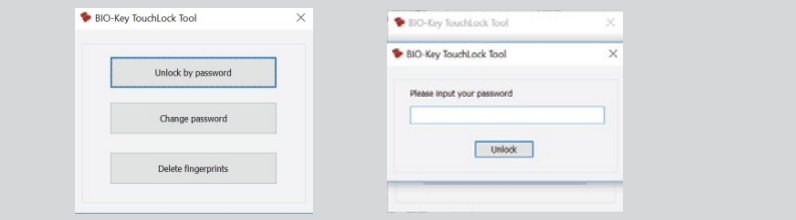


Touch sensor with the previously enrolled finger again and wait for the solid blue light flashes for 2 seconds.
All the enrolled fingerprints are successfully erased.

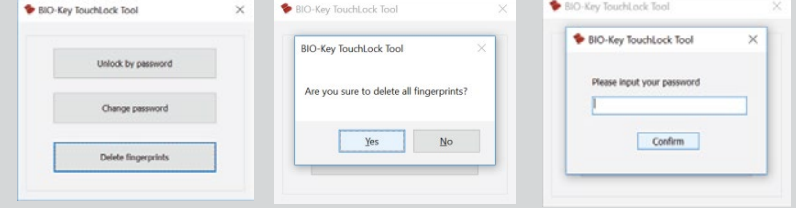
Reset the Lock Using PC Tool

Reset the Lock Using The TouchLock PC Tool (PC only)

- Go to the following URL: <https://www.aluratek.com/bio-key-touchlock-tsa-all-weater-bio-lock-fingerprint-recognition/>
- Find the Downloads section on the product page and click the link "TouchLock_PC Tool" to download the tool
- Connect the lock to your computer's USB port via the included USB cable
- Open the "TouchLock PC Tool" ZIP folder and click on the tool
- Select "Unlock by Password" button as shown below:



To erase all enrolled fingerprint records:
-Click on the "Delete Fingerprints"
-Click "yes" and enter 4 digit password.
-Then click "Confirm".



Change the password:
1. Click on "change password"
2. Enter the current 4 digit password
3. Enter and confirm the new 4 digit password

Fast-Click Unlock Mode

Caution: Please set up your personalized Fast-Click Code after first fingerprint registration IMMEDIATELY.

Fast-Click allows you to create a custom access code of short and long taps to manually un-lock the lock without a computer. The Fast-Click code is a 6-digit code made up of a string of 6 long and short taps.

- Code Registration :
- To enter the code registration mode:
 - Tap and hold the hook for 5 seconds and wait for a flashing blue light, continue holding until the red and blue light flashes.
 - Input your first Fast-Click digit:
 - A long tap using the hook longer than 1 seconds, red and blue light turns on and that indicates a successful registration of a long tap.
 - A short tap is less than 1 second, LED change to a rapid flashing blue light, indicates a successful registration of a short tap.
 - The red and blue light will flash rapidly after each successful registration.
 - Repeat step 2 until all 6 digits are successfully enrolled. After a code has been successfully registered, a blue light will be activated and stay on for 4 seconds.
- * Please write down your code after registration: _ _ _ _ _ _

Unlock Using Fast-Click Code or Change Your Code:

- To Unlock:
- Tap and hold the hook for 5 seconds and wait for a flashing blue light, continue holding until the red and blue light flashes slowly.
 - Enter your registered code and wait until the blue light activates, that indicates the code is entered correctly. The lock will be unlocked after 3 seconds.
 - If the code is entered incorrectly, a red light will be activated and turns into a slow flashing red and blue light right after, then you can re-enter your registered Fast-Click code.
* The lock will exit the Fast-Click Unlock Mode after 4 attempts of entering the wrong code.

Change or Erase Your Fast-Click Unlock Code

- Repeat the previous step 2.1.2.2 and tap the hook within 3 seconds after the blue light is activated, then a rapid red blue light will flash, indicates a new code can be enrolled. (The previous registered code will be erased automatically)
- Repeat step 1.2, 1.3 and 1.4 in Code Registration section to input your new Fast-Click Code.

Erase the Fast-Click Code
-When clear all fingerprint record, Fast-Click code record would also be erased, method please refer to erase fingerprint record section in this manual

FAQ

- In the unlikely event the battery dies while locked, TouchLock should be charged using an external battery to provide quick access to un-lock, such as a Power Bank.
- Low battery warning: the red light will flash 3 times when the battery has 30% charge left, it will flash continuously when it has 10% charge left
- Tip: try registering multiple fingers. Smaller profile fingers tend to work best.

Warranty

Aluratek warrants this product against defect in material or workmanship for **1 YEAR** from the date of purchase.

This warranty becomes invalid if the factory-supplied serial number or "warranty void" sticker has been removed or altered on the product.

- This warranty does not cover:
- Cosmetic damage or damage due to acts of God
 - Accident, misuse, abuse, negligence or modification of any part of the product.
 - Damage due to improper operation or maintenance, connection to improper equipment, or attempted repair by anyone other than Aluratek.
 - Products sold AS IS or WITH FAULTS.

IN NO EVENT SHALL ALURATEK'S LIABILITY EXCEED THE PRICE PAID FOR THE PRODUCT FROM DIRECT, INDIRECT, SPECIAL, INCIDENTAL, OR CONSEQUENTIAL DAMAGES RESULTING FROM THE USE OF THE PRODUCT, IT'S ACCOMPANYING SOFTWARE, OR IT'S DOCUMENTATION.

Aluratek makes no warranty or representation, expressed, implied, or statutory, with respect to its products, contents or use of this documentation and all accompanying software, and specifically disclaims its quality, performance, merchantability, or fitness for any particular purpose. Aluratek reserves the right to revise or update its product, software or documentation without obligation to notify any individual or entity.

Technical Support

If you need further assistance, please contact the Aluratek support department for troubleshooting prior to returning this device.

E-mail: support@aluratek.com
Web: www.aluratek.com/helpdesk
Local (Irvine, CA): 714-586-8730
Toll free: 1-866-580-1978